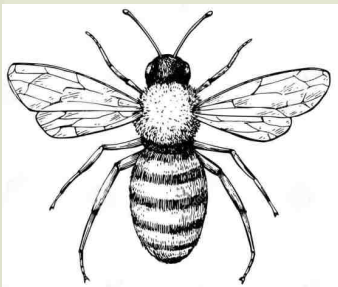


Rallye 5-7 ans

Maison de la Prairie
Corrigé

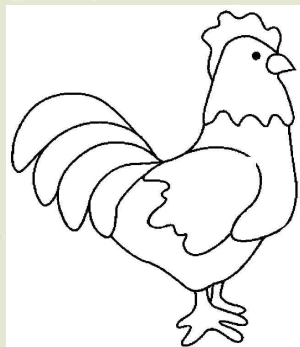
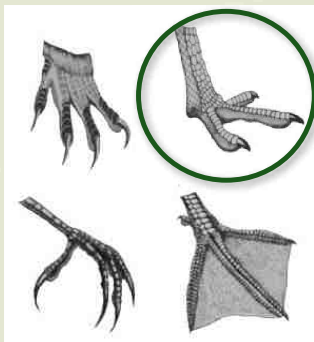
1



2



3



4

foin

viande

céréales

gâteau

5



6

Chevreau

Chèvre

Lapereau

Lapine

Porcelet

Truie

Poussin

Poule

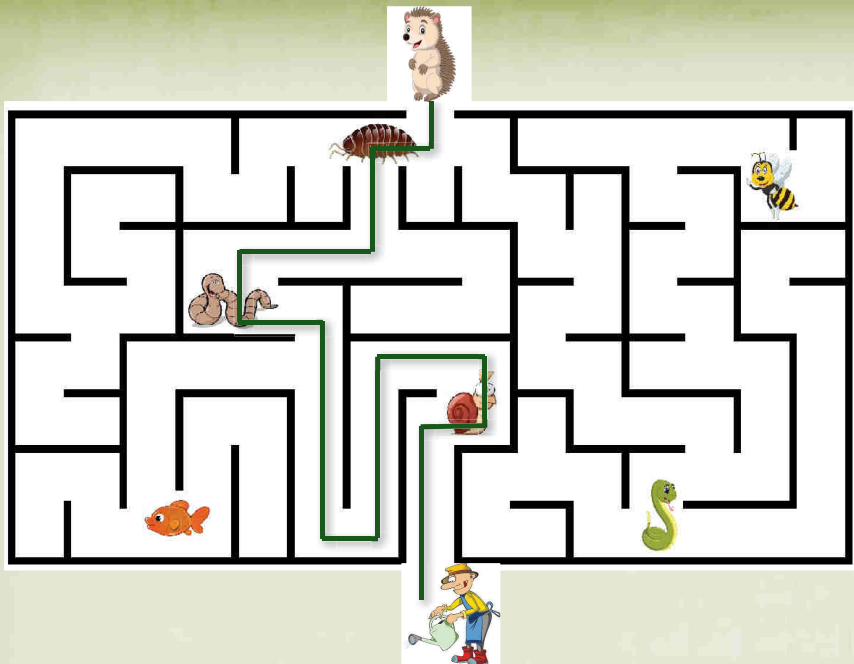
Veau

Vache

7



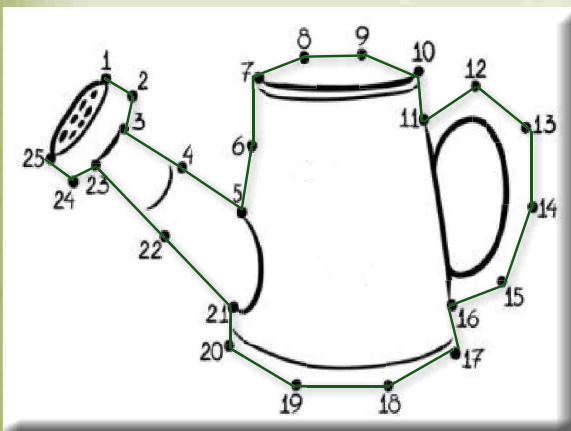
8



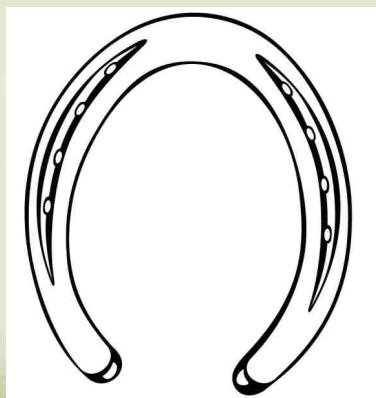
11



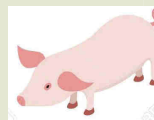
9



10



12



Clapier

Mare

Ecurie

Bergerie

Etable

Porcherie

Poulailler

